

COMMERCIAL AIR CONDITIONER

Flow Master Series

T1/50Hz

R410a

R407c

R22



HIGH STATIC DUCTED

WIDE RANGE OF PRODUCT

KENDO High Static Ducted units are designed for air-conditioning system in commercial and industrial application comprises various model with complete range of equipment from 8hp to 60.0 hp for indoor units and 8hp to 20hp for outdoor units.



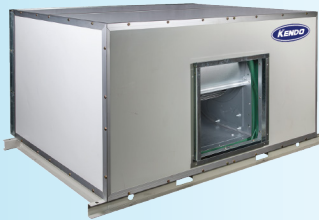
Single Skin Indoor Unit (8 ~ 15hp)



Outdoor Unit (8hp)



Outdoor Unit (10hp & 12.5hp)



Double Skin Indoor Unit (20 ~ 60hp)



Outdoor Unit (20hp)



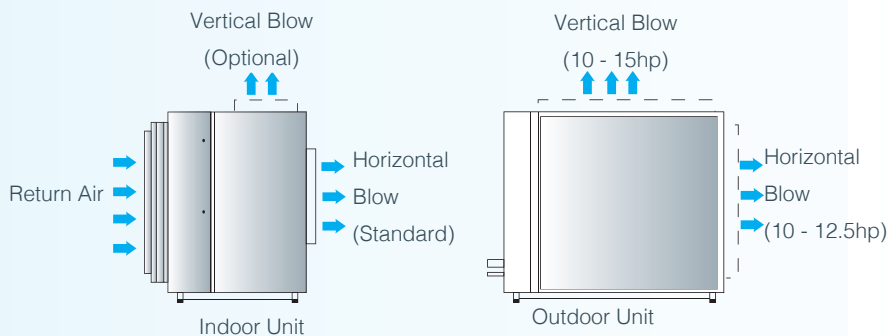
Outdoor Unit (15hp)

STRONG AIR FLOW

A belt driven drive package (12.5Hp indoor and above) offer flexibility on various air flow rate and various static pressure application.

Design with high external static pressure to make sure the air distribution is even to every corner with long ducting application.

Flexible changing the external static pressure and air flow by adjusting the 3 fan speed (8.0 ~ 10.0 hp) or changing the pulley size (12.5 ~ 60.0 hp) provide more flexibility in installation and produce optimum cooling and comfort.



HIGH PERFORMANCE SCROLL COMPRESSOR

Adopting very famous brand with a special low noise, low vibration and high performance scroll compressor. Possesses a high Energy Efficiency Ratio (EER) delivering exceptional performance with a reduction in energy consumption. 100% gas cooler motor with internal line breaker or solid state motor protectors.



FLEXIBLE APPLICATION & INSTALLATION

The indoor and outdoor unit allows you to choose the air discharge direction for either horizontal or vertical air discharge application (Optional). This package is optional and need to confirm before do the ordering.

HIGH QUALITY CASING

The indoor casing is constructed with powder coated electro galvanized mild steel sheet and insulated with 1/2" (13mm) thick 24kg/m³ PE foam (8.0 ~ 15.0hp) or 1" (25mm) thick double skin panel injected with polyurethane foam (PU) insulation with "K" value of 0.02Watt/°C

HIGH EFFICIENCY HEAT EXCHANGER

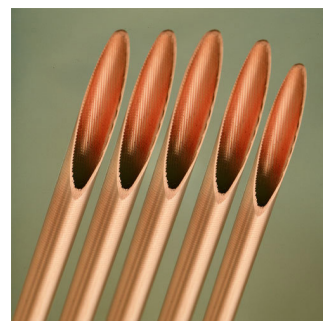
Each coil consist of staggered row of 3/8" OD seamless copper tubes, mechanically expanded into die-formed aluminum fins.

The evaporator coil come standard with hydrophilic coated fin to ensure optimum system effectiveness and durability.

The condenser coil provided with integral sub-cooling circuit to maximize energy efficiency and promote superior match-system operating performance when connected to suitable sized DX Evaporator-Blower unit.

Coils are leak and pressure tested to 450psig while storage pressure is keep at 100 Psig.

Flow Master Series



SAFETY FEATURES

Built in internal overload protection for compressor. All outdoor units are equipped with auto reset high pressure and low pressure cut-out to protect against compressor damage due to high head pressure and system leakage respectively.



Outdoor unit control circuit

**Phase sequencer, overload and delay timer is optional.*

AIR FILTER

The Indoor unit come with washable synthetic fibre air filter. Designed with easy withdrawal and renewal of filter cells. HEPA, AAF and many type of air filter can be requested to meet the requirement and building application.



Washable Air Filter

PART LOAD WITH MULTI CIRCUIT DESIGN

The unit has single (8.0 ~ 15.0 hp) and multiple hermetic scroll compressors (20.0 ~ 60.0 hp) with independent refrigerant circuit.

Each refrigerant circuit consists of a high efficiency compressor and condenser. With this modular system configuration combining with microprocessor controller allows the units to operate under partial load condition to meet the cooling capacity demand.

No total shut down when servicing or repairing a faulty compressor or outdoor units.



Single Condensing Unit



Indoor Unit (8 ~ 15hp)



Single Stage Controller



In a OUTDOOR MODULAR SYSTEM, any faulty unit can be shut down and the remaining units can keep on working.



Indoor Unit (20 ~ 60hp)



Sequential Controller

INTELLIGENT CONTROLLER (STANDARD)

All the features can be easily set and change through microprocessor controller. It ensures comfortable cooling is delivered to the user with user friendly wired keypad controller.

Wide range of control features including mode, temperature setting, timer, self diagnosis error code and etc.

Indoor Unit Specification (R22)

Indoor Unit			KHD-807C	KHD-1007C	KHD-1257C	KDH-1507C
Cooling Capacity	Btu/hr		80,000	100,000	125,000	150,000
	kW		23.45	29.31	36.64	43.96
Indoor Input Power	W		1,630	2,200	1,900	1,900
Indoor Running Current	A		3.70 x 2	5.00 x 2	3.30	3.30
Power Source	V/Ph/HZ		220 ~ 240/1/50	220 ~ 240/1/50	380 ~ 415/3/50	380 ~ 415/3/50
Refrigerant / Control Type			R22 Indoor TXV	R22 Indoor TXV	R22 Indoor TXV	R22 Indoor TXV
Air Flow	CFM / CMH		2,350 / 4,000	2,945 / 5,000	4,240 / 7,200	4,415 / 7,500
Air Filter Type / Material			Washable / Nylon	Washable / Nylon	Washable / Nylon	Washable / Nylon
External Static Pressure	pa / in.wg		100 / 0.4	100 / 0.4	150 / 0.6	150 / 0.6
Sound Pressure Level (Measured 1m away from indoor unit)	dBA		64	66	65	66
Unit Dimension (H x W x D)	mm		440 x 1,450 x 900	440 x 1,750 x 900	707 x 1,882 x 1,140	707 x 1,882 x 1,140
Unit Weight	kg		99	126	208	209
Connection Liquid	mm (in)		15.88 (5/8)	15.88 (5/8)	15.88 (5/8)	15.88 (5/8)
Pipe Size Gas	mm (in)		28.58 (1 ¹ / ₈)	28.58 (1 ¹ / ₈)	34.93 (1 ³ / ₈)	34.93 (1 ³ / ₈)
Recommended Outdoor Unit Model			KDO-807-E	KDO-1007-E	KDO-1257-E	KDO-1507-E

Indoor Unit			KHD-2007C2	KHD-2507C	KHD-3007C2	KDH-3507C3
Cooling Capacity	Btu/hr		200,000	250,000	300,000	350,000
	kW		58.62	73.27	87.92	102.58
Indoor Input Power	W		3,620	4,740	6,370	6,370
Indoor Running Current	A		6.10	8.00	10.70	10.70
Power Source	V/Ph/HZ		380 ~ 415 / 3/50	380 ~ 415/3/50	380 ~ 415/3/50	380 ~ 415/3/50
Refrigerant / Control Type			R22 Indoor TXV	R22 Indoor TXV	R22 Indoor TXV	R22 Indoor TXV
Air Flow	CFM / CMH		5,885 / 10,000	8,005 / 13,600	8,830 / 15,000	10,500 / 17,840
Air Filter Type / Material			Washable / Nylon	Washable / Nylon	Washable / Nylon	Washable / Nylon
External Static Pressure	pa / in.wg		250 / 1.00	250 / 1.00	300 / 1.20	300 / 1.20
Sound Pressure Level (Measured 1m away from indoor unit)	dBA		66	66	67	67
Unit Dimension (H x W x D)	mm		780 x 2,248 x 1,297	1,150 x 2,252 x 1,347	1,175 x 2,121 x 1,547	1,450 x 2,077 x 1,547
Unit Weight	kg		266	322	377	455
Connection Liquid	mm (in)		15.88 (5/8)(x2)	15.88 (5/8)(x2)	15.88 (5/8)(x2)	15.88 (5/8)(x2) & 15.88 (5/8)
Pipe Size Gas	mm (in)		28.58 (1 ¹ / ₈)(x2)	28.58 (1 ¹ / ₈)(x2)	34.93 (1 ³ / ₈)(x2)	34.93 (1 ³ / ₈) & 28.58 (1 ¹ / ₈)
Recommended Outdoor Unit Model			KDO2-2007-E or KDO-1007-E(x2)	KDO-1257-E(x2)	KDO-1507-E(x2)	KDO-1257-E(x2) + KDO-1007-E

Indoor Unit			KHD-4007C4	KHD-4507C3	KHD-5007C4	KDH-6007C4
Cooling Capacity	Btu/hr		400,000	450,000	500,000	600,000
	kW		117.23	131.89	146.54	175.85
Indoor Input Power	W		8,490	8,490	12,360	12,570
Indoor Running Current	A		14.20	14.20	20.50	22.40
Power Source	V/Ph/HZ		380 ~ 415/3/50	380 ~ 415/3/50	380 ~ 415/3/50	380 ~ 415/3/50
Refrigerant / Control Type			R22 Indoor TXV	R22 Indoor TXV	R22 Indoor TXV	R22 Indoor TXV
Air Flow	CFM / CMH		11,770 / 20,000	12,950 / 22,000	14,125 / 24,000	18,245 / 31,000
Air Filter Type / Material			Washable / Nylon	Washable / Nylon	Washable / Nylon	Washable / Nylon
External Static Pressure	pa / in.wg		300 / 1.20	350 / 1.41	400 / 1.60	400 / 1.60
Sound Pressure Level (Measured 1m away from indoor unit)	dBA		69	69	70	71
Unit Dimension (H x W x D)	mm		1,450 x 2,434 x 1,547	1,450 x 2,777 x 1,637	1,450 x 2,777 x 1,637	1,650 x 2,777 x 1,737
Unit Weight	kg		584	600	640	755
Connection Liquid	mm (in)		15.88 (5/8)(x4)	15.88 (5/8)(x2)	15.88 (5/8)(x4)	15.88 (5/8)(x4)
Pipe Size Gas	mm (in)		28.58 (1 ¹ / ₈)(x4)	34.93 (1 ³ / ₈)(x2)	34.93 (1 ³ / ₈)(x4)	34.93 (1 ³ / ₈)(x4)
Recommended Outdoor Unit Model			KDO-1007-E(x4)	KDO-1507-E(x3)	KDO-1257-E(x4)	KDO-1507-E(x4)

Conditions: 1) Nominal cooling capacities are based on the following conditions : Indoor 26.7°C DB, 19.4 °C WB, Outdoor 35°C DB.

2) All specifications are subjected to change by manufacturer without prior notice.

Indoor Unit Specification (R407c)

Indoor Unit			KHD-807C-K	KHD-1007C-K	KHD-1257C-K	KHD-1507C-K
Cooling Capacity	Btu/hr		77,600	97,000	121,250	145,500
	kW		22.74	28.43	35.54	42.64
Indoor Input Power	W		1,630	2,200	1,900	1,900
Indoor Running Current	A		3.70 x 2	5.00 x 2	3.30	3.30
Power Source	V/Ph/HZ		220 ~ 240/1/50	220 ~ 240/1/50	380 ~ 415/3/50	380 ~ 415/3/50
Refrigerant / Control Type			R407C Indoor TXV	R407C Indoor TXV	R407C Indoor TXV	R407C Indoor TXV
Air Flow	CFM / CMH		2,350 / 4,000	2,945 / 5,000	4,240 / 7,200	4,415 / 7,500
Air Filter Type / Material			Washable / Nylon	Washable / Nylon	Washable / Nylon	Washable / Nylon
External Static Pressure	pa / in.wg		100 / 0.4	100 / 0.4	150 / 0.6	150 / 0.6
Sound Pressure Level (Measured 1m away from indoor unit)	dBA		64	66	65	66
Unit Dimension (H x W x D)	mm		440 x 1,450 x 900	440 x 1,750 x 900	707 x 1,882 x 1,140	707 x 1,882 x 1,140
Unit Weight	kg		99	126	208	209
Connection Liquid	mm (in)		15.88 (5/8)	15.88 (5/8)	15.88 (5/8)	15.88 (5/8)
Pipe Size Gas	mm (in)		28.58 (1 ¹ / ₈)	28.58 (1 ¹ / ₈)	34.93 (1 ³ / ₈)	34.93 (1 ³ / ₈)
Recommended Outdoor Unit Model			KDO-807-EK	KDO-1007-EK	KDO-1257-EK	KDO-1507-EK

Indoor Unit			KHD-2007C2-K	KHD-2507C-K	KHD-3007C2-K	KHD-3507C3-K
Cooling Capacity	Btu/hr		194,000	242,500	291,000	339,500
	kW		56.86	71.07	85.29	99.50
Indoor Input Power	W		3,620	4,740	6,370	6,370
Indoor Running Current	A		6.10	8.00	10.70	10.70
Power Source	V/Ph/HZ		380 ~ 415/3/50	380 ~ 415/3/50	380 ~ 415/3/50	380 ~ 415/3/50
Refrigerant / Control Type			R407C Indoor TXV	R407C Indoor TXV	R407C Indoor TXV	R407C Indoor TXV
Air Flow	CFM / CMH		5,885 / 10,000	8,005 / 13,600	8,830 / 15,000	10,500 / 17,840
Air Filter Type / Material			Washable / Nylon	Washable / Nylon	Washable / Nylon	Washable / Nylon
External Static Pressure	pa / in.wg		250 / 1.00	250 / 1.00	300 / 1.20	300 / 1.20
Sound Pressure Level (Measured 1m away from indoor unit)	dBA		66	66	67	67
Unit Dimension (H x W x D)	mm		780 x 2,248 x 1,297	1,150 x 2,252 x 1,347	1,175 x 2,121 x 1,547	1,450 x 2,077 x 1,547
Unit Weight	kg		266	322	377	455
Connection Liquid	mm (in)		15.88 (5/8)(x2)	15.88 (5/8)(x2)	15.88 (5/8)(x2)	15.88 (5/8)(x2) & 15.88 (5/8)
Pipe Size Gas	mm (in)		28.58 (1 ¹ / ₈)(x2)	34.93 (1 ¹ / ₈)(x2)	34.93 (1 ³ / ₈)(x2)	34.93 (1 ³ / ₈)
Recommended Outdoor Unit Model			KDO2-2007-EK or KDO-1007-EK (x2)	KDO-1257-EK (x2)	KDO-1507-EK (x2)	KDO-1257-EK (x2) + KDO-1007-EK

Indoor Unit			KHD-4007C4-K	KHD-4507C3-K	KHD-5007C4-K	KHD-6007C4-K
Cooling Capacity	Btu/hr		388,000	436,500	485,000	582,000
	kW		113.72	127.93	142.15	170.57
Indoor Input Power	W		8,490	8,490	12,360	12,570
Indoor Running Current	A		14.20	14.20	20.50	22.40
Power Source	V/Ph/HZ		380 ~ 415/3/50	380 ~ 415/3/50	380 ~ 415/3/50	380 ~ 415/3/50
Refrigerant / Control Type			R407C Indoor TXV	R407C Indoor TXV	R407C Indoor TXV	R407C Indoor TXV
Air Flow	CFM / CMH		11,770 / 20,000	12,950 / 22,000	14,125 / 24,000	18,245 / 31,000
Air Filter Type / Material			Washable / Nylon	Washable / Nylon	Washable / Nylon	Washable / Nylon
External Static Pressure	pa / in.wg		300 / 1.20	350 / 1.41	400 / 1.60	400 / 1.60
Sound Pressure Level (Measured 1m away from indoor unit)	dBA		69	69	70	71
Unit Dimension (H x W x D)	mm		1,450 x 2,434 x 1,547	1,450 x 2,777 x 1,637	1,450 x 2,777 x 1,637	1,650 x 2,777 x 1,737
Unit Weight	kg		584	600	640	755
Connection Liquid	mm (in)		15.88 (5/8)(x4)	15.88 (5/8)(x2)	15.88 (5/8)(x4)	15.88 (5/8)(x4)
Pipe Size Gas	mm (in)		28.58 (1 ¹ / ₈)(x4)	34.93 (1 ³ / ₈)(x2)	34.93 (1 ³ / ₈)(x4)	34.93 (1 ³ / ₈)(x4)
Recommended Outdoor Unit Model			KDO-1007-EK (x4)	KDO-1507-EK (x3)	KDO-1257-EK (x4)	KDO-1507-EK (x4)

Conditions: 1) Nominal cooling capacities are based on the following conditions : Indoor 26.7°C DB, 19.4 °C WB, Outdoor 35°C DB.

2) All specifications are subjected to change by manufacturer without prior notice.

Indoor Unit Specification (R410a)

Indoor Unit			KHD-807C-N	KHD-1007C-N	KHD-1257C-N	KHD-1507C-N
Cooling Capacity	Btu/hr		80,000	100,000	125,000	150,000
	kW		23.45	29.31	36.64	43.96
Indoor Input Power	W		1,630	2,200	1,900	1,900
Indoor Running Current	A		3.70 x 2	5.00 x 2	3.30	3.30
Power Source	V/Ph/HZ		220 ~ 240/1/50	220 ~ 240/1/50	380 ~ 415/3/50	380 ~ 415/3/50
Refrigerant / Control Type			R410a Indoor TXV	R410a Indoor TXV	R410a Indoor TXV	R410a Indoor TXV
Air Flow	CFM / CMH		2,350 / 4,000	2,945 / 5,000	3,679 / 6,250	4,415 / 7,500
Air Filter Type / Material			Washable / Nylon	Washable / Nylon	Washable / Nylon	Washable / Nylon
External Static Pressure	pa / in.wg		145 / 0.58	175 / 0.70	200 / 0.80	200 / 0.80
Sound Pressure Level (Measured 1m away from indoor unit)	dBA		64	65	65	65
Unit Dimension (H x W x D)	mm		440 x 1,450 x 900	440 x 1,750 x 900	700 x 1,860 x 1,140	700 x 1,860 x 1,140
Unit Weight	kg		99	126	208	209
Connection Liquid	mm (in)		12.70 (1/2)	12.70 (1/2)	12.70 (1/2)	15.88 (5/8)
Pipe Size Gas	mm (in)		22.23 (7/8)	25.40 (1)	28.58 (1 ¹ /8)	34.93 (1 ³ /8)
Recommended Outdoor Unit Model			KDO-807-EN	KDO-1007-EN	KDO-1257-EN	KDO-1507-EN

Indoor Unit			KHD-2007C2-N	KHD-2507C2-N	KHD-3007C2-N	KHD-3507C3-N
Cooling Capacity	Btu/hr		200,000	250,000	300,000	350,000
	kW		58.62	73.27	87.92	102.58
Indoor Input Power	W		3,620	4,740	6,370	6,370
Indoor Running Current	A		6.10	8.00	10.70	10.70
Power Source	V/Ph/HZ		380 ~ 415/3/50	380 ~ 415/3/50	380 ~ 415/3/50	380 ~ 415/3/50
Refrigerant / Control Type			R410a Indoor TXV	R410a Indoor TXV	R410a Indoor TXV	R410a Indoor TXV
Air Flow	CFM / CMH		5,885 / 10,000	7,358 / 12,500	8,830 / 15,000	10,500 / 17,840
Air Filter Type / Material			Washable / Nylon	Washable / Nylon	Washable / Nylon	Washable / Nylon
External Static Pressure	pa / in.wg		250 / 1.00	300 / 1.20	300 / 1.20	300 / 1.20
Sound Pressure Level (Measured 1m away from indoor unit)	dBA		66	66	67	67
Unit Dimension (H x W x D)	mm		780 x 2,248 x 1,297	1,155 x 2,241 x 1,347	1,175 x 2,121 x 1,547	1,450 x 2,081 x 1,547
Unit Weight	kg		266	322	377	380
Connection Liquid	mm (in)		12.70 (1/2)(x2)	12.70 (1/2)(x2)	15.88 (5/8)(x2)	12.70 (1/2)(x3)
Pipe Size Gas	mm (in)		25.40 (1)(x2)	28.58 (1 ¹ /8)(x2)	34.93 (1 ³ /8)(x2)	25.40 (1) & 28.58 (1 ¹ /8)(x2)
Recommended Outdoor Unit Model			KDO-1007-EN (x2)	KDO-1257-EN (x2)	KDO-1507-EN (x2)	KDO-1007-EN + KDO-1257-EN (x2)

Indoor Unit			KHD-4007C4-N	KHD-4507C3-N	KHD-5007C4-N	KHD-6007C4-N
Cooling Capacity	Btu/hr		400,000	450,000	485,000	582,000
	kW		117.23	131.89	142.15	170.57
Indoor Input Power	W		8,490	8,490	12,360	12,570
Indoor Running Current	A		14.20	14.20	20.50	22.40
Power Source	V/Ph/HZ		380 ~ 415/3/50	380 ~ 415/3/50	380 ~ 415/3/50	380 ~ 415/3/50
Refrigerant / Control Type			R410a Indoor TXV	R410a Indoor TXV	R410a Indoor TXV	R410a Indoor TXV
Air Flow	CFM / CMH		11,770 / 20,000	13,244 / 22,500	14,715 / 25,000	17,658 / 30,000
Air Filter Type / Material			Washable / Nylon	Washable / Nylon	Washable / Nylon	Washable / Nylon
External Static Pressure	pa / in.wg		300 / 1.20	350 / 1.41	400 / 1.60	400 / 1.60
Sound Pressure Level (Measured 1m away from indoor unit)	dBA		68	68	68	70
Unit Dimension (H x W x D)	mm		1,450 x 2,432 x 1,547	1,450 x 2,782 x 1,637	1,450 x 2,782 x 1,637	1,650 x 2,782 x 1,737
Unit Weight	kg		584	644	644	880
Connection Liquid	mm (in)		12.70 (1/2)(x4)	15.88 (5/8)(x3)	12.70 (1/2)(x4)	15.88 (5/8)(x4)
Pipe Size Gas	mm (in)		25.40 (1)(x4)	34.93 (1 ³ /8)(x3)	34.93 (1 ³ /8)(x4)	34.93 (1 ³ /8)(x4)
Recommended Outdoor Unit Model			KDO-1007-EN (x4)	KDO-1507-EN (x3)	KDO-1257-EN (x4)	KDO-1507-EN (x4)

Indoor Unit			KHD-7507C4-N			
Cooling Capacity	Btu/hr		750,000			
	kW		219.81			
Indoor Input Power	W		13,000			
Indoor Running Current	A		24.50			
Power Source	V/Ph/HZ		380 ~ 415/3/50			
Refrigerant / Control Type			R410a Indoor TXV			
Air Flow	CFM / CMH		22,073 / 37,500			
Air Filter Type / Material			Washable / Nylon			
External Static Pressure	pa / in.wg		450 / 1.81			
Sound Pressure Level (Measured 1m away from indoor unit)	dBA		70			
Unit Dimension (H x W x D)	mm		2,006 x 2,782 x 1,839			
Unit Weight	kg		900			
Connection Liquid	mm (in)		15.88 (5/8)(x5)			
Pipe Size Gas	mm (in)		34.93 (1 ³ /8)(x5)			
Recommended Outdoor Unit Model			KDO-1507-EN (x5)			

Outdoor Unit Specification (R22)

Flow Master Series

Outdoor Unit			KDO-807-E	KDO-1007-E	KDO-1257-E	KDO-1507-E	KDO2-2007E
Cooling Capacity	Btu/hr		80,000	100,000	125,000	150,000	200,000 (100,000+100,000)
	kW		23.45	29.31	36.64	43.96	58.62
Outdoor Input Power	W		7,570	9,820	11,180	15,475	19,640
Outdoor Running Current	A		14.20	17.50	19.90	29.56	35.00
Power Source	V/Ph/HZ		380 ~ 415/3/50	380 ~ 415/3/50	380 ~ 415/3/50	380 ~ 415/3/50	380 ~ 415/3/50
Refrigerant / Control Type			R22 Indoor TXV	R22 Indoor TXV	R22 Indoor TXV	R22 Indoor TXV	R22 Indoor TXV
Air Flow	CFM / CMH		6,000 / 10,190	7,000 / 11,890	8,000 / 13,590	12,000 / 20,390	14,000 / 23,780
Unit Dimension (H x W x D)	mm		951 x 1,308 x 508	1,213 x 967 x 1,100	1,213 x 967 x 1,110	1,225 x 967 x 1,110	1,090 x 1,032 x 1,803
Unit Weight	kg		158	199	202	198	400
Connection	Liquid	mm (in)	15.88 (5/8)	15.88 (5/8)	15.88 (5/8)	15.88 (5/8)	15.88 (5/8)(x2)
Pipe Size	Gas	mm (in)	28.58 (1 ¹ / ₈)	28.58 (1 ¹ / ₈)	34.93 (1 ³ / ₈)	34.93 (1 ³ / ₈)	28.58 (1 ¹ / ₈)(x2)

Outdoor Unit Specification (R407c)

Outdoor Unit			KDO-807-EK	KDO-1007-EK	KDO-1257-EK	KDO-1507EK	KDO2-2007EK
Cooling Capacity	Btu/hr		77,600	97,000	121,250	145,500	194,000 (97,000+97,000)
	kW		22.67	28.43	35.54	42.64	56.86
Outdoor Input Power	W		7,770	9,770	11,230	15,525	19,540
Outdoor Running Current	A		14.60	17.70	20.00	30.46	35.40
Power Source	V/Ph/HZ		380 ~ 415/3/50	380 ~ 415/3/50	380 ~ 415/3/50	380 ~ 415/3/50	380 ~ 415/3/50
Refrigerant / Control Type			R407C Indoor TXV	R407C Indoor TXV	R407C Indoor TXV	R407C Indoor TXV	R407C Indoor TXV
Air Flow	CFM / CMH		6,000 / 10,190	7,000 / 11,890	8,000 / 13,590	12,000 / 20,390	14,000 / 23,780
Unit Dimension (H x W x D)	mm		951 x 1,308 x 508	1,213 x 967 x 1,100	1,213 x 967 x 1,100	1,225 x 967 x 1,110	1,090 x 1,032 x 1,803
Unit Weight	kg		158	199	202	198	400
Connection	Liquid	mm (in)	15.88 (5/8)	15.88 (5/8)	15.88 (5/8)	15.88 (5/8)	15.88 (5/8)(x2)
Pipe Size	Gas	mm (in)	28.58 (1 ¹ / ₈)	28.58 (1 ¹ / ₈)	34.93 (1 ³ / ₈)	34.93 (1 ³ / ₈)	28.58 (1 ¹ / ₈)(x2)

Outdoor Unit Specification (R410a)

Outdoor Unit			KDO-807-EN	KDO-1007-EN	KDO-1257-EN	KDO-1507EN
Cooling Capacity	Btu/hr		80,000	100,000	125,000	150,000
	kW		23.45	29.31	36.64	43.96
Outdoor Input Power	W		7,140	9,430	11,230	15,525
Outdoor Running Current	A		13.20	16.00	18.2	28.20
Power Source	V/Ph/HZ		380 ~ 415/3/50	380 ~ 415/3/50	380 ~ 415/3/50	380 ~ 415/3/50
Refrigerant / Control Type			R410a Indoor TXV	R410a Indoor TXV	R410a Indoor TXV	R410a Indoor TXV
Air Flow	CFM / CMH		6,000 / 10,190	7,000 / 11,890	8,000 / 13,590	12,000 / 20,390
Unit Dimension (H x W x D)	mm		951 x 1,308 x 508	1,035 x 1,118 x 1,012	1,035 x 1,118 x 1,012	1,035 x 1,118 x 1,012
Unit Weight	kg		158	199	202	198
Connection	Liquid	mm (in)	12.70 (1/2)	12.70 (1/2)	12.70 (1/2)	15.88 (5/8)
Pipe Size	Gas	mm (in)	22.23 (7/8)	25.40 (1)	28.58 (1 ¹ / ₈)	34.93 (1 ³ / ₈)

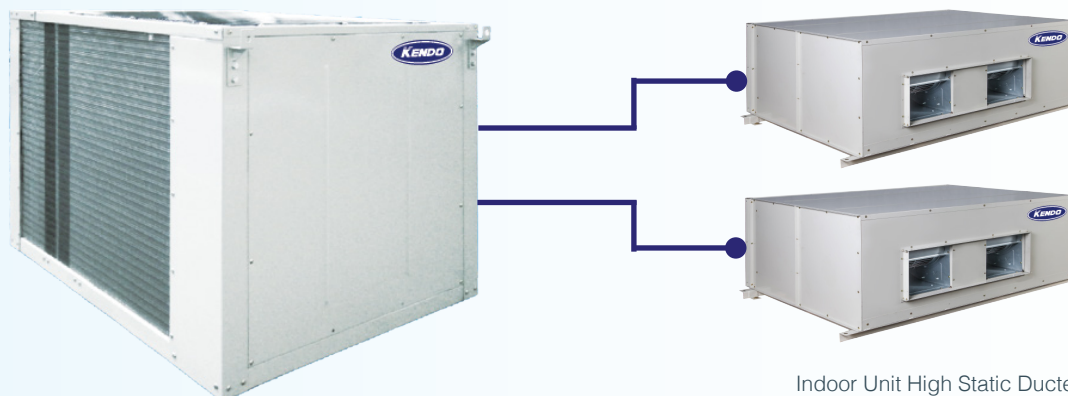
Conditions: 1) Nominal cooling capacities are based on the following conditions : Indoor 26.7°C DB, 19.4 °C WB, Outdoor 35°C DB.

2) All specifications are subjected to change by manufacturer without prior notice.

MULTI SPLIT 1 to 2 (Single Condenser)

| WIDE RANGE OF PRODUCT

KENDO High Static Ducted multi split units are designed for air-conditioning system in commercial and industrial application. This unit has multiple hermetic compressors with independent refrigerant circuit in single foaming condenser coil.

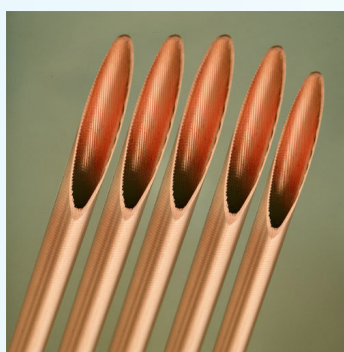


Outdoor Unit Multi Split (Single Coil)

Indoor Unit High Static Ducted

| STRONG AIR FLOW

Each coil consist of staggered row of 3/8" OD seamless copper tubes, mechanically expanded into die-formed aluminum fins. The evaporator coil come standard with hydrophilic coated fin to ensure optimum system effectiveness and durability. The condenser coil provided with integral sub-cooling circuit to maximize energy efficiency and promote superior match-system operating performance when connected to suitable sized DX Evaporator-Blower unit. Coils are leak and pressure tested to 450psig while storage pressure is keep at 100 Psig.



| HIGH PERFORMANCE SCROLL COMPRESSOR

Adopting very famous brand with a special low noise, low vibration and high performance scroll compressor. Possesses a high Energy Efficiency Ratio (EER) delivering exceptional performance with a reduction in energy consumption. 100% gas cooler motor with internal line breaker or solid state motor protectors.



Scroll Compressor

| SLIM INDOOR DESIGN

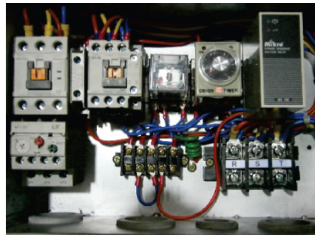
The indoor casing is constructed with powder coated electro galvanized mild steel sheet and insulated with 1/2" (13mm) thick 24kg/m PE foam. Slim indoor design with body height 17.5" (440mm). The internal vents are easily accessible by removing the service panels.

| HIGH QUALITY CASING

The indoor and outdoor casing is constructed with powder coated electro galvanized mild steel sheet and insulated with 1/2" (13mm) thick 24kg/m³ PE foam

| SAFETY FEATURES

Built in internal overload protection for compressor. All outdoor units are equipped with auto reset high pressure and low pressure cut-out to protect against compressor damage due to high head pressure and system leakage respectively



Outdoor unit control circuit

**Phase sequencer, overload and delay timer is optional.*

| AIR FILTER

The Indoor unit come washable synthetic fibre air filter. Designed with easy withdrawal and renewal of filter cells. HEPA, AAF and many type of air filter can be requested to meet the requirement and building application.

Flow Master Series



Washable Air Filter

| PART LOAD WITH MULTI CIRCUIT DESIGN

The unit has multiple hermetic scroll compressors with independent refrigerant circuit in single foaming condenser coil. Each refrigerant circuit consists of a high efficiency compressor and condenser. With this modular configuration combining with microprocessor controller allows the units to operate under partial load condition to meet the cooling capacity demand.



Outdoor Unit Multi Split(Single Coil)



Indoor Unit High Static Ducted



Sequential Controller

| INTELLIGENT CONTROLLER (OPTIONAL)

All the features can be easily set and change through microprocessor controller. It ensures comfortable cooling is delivered to the user with user friendly wired keypad controller. Wide range of control features including mode, temperature setting, timer, self diagnosis error code and etc.

Indoor Unit Specification

Indoor Unit		KHD2-1707 / KHD2-1707C	KHD2-2107 / KHD2-2107C	KHD2-1707C-K	KHD2-2107C-K
Cooling Capacity	Btu/hr	170,600 (85,300 x 2)	213,250 (106,625 x 2)	170,600 (85,300 x 2)	213,250 (106,625 x 2)
	kW	50.00 (25.0 x 2)	62.50 (31.25 x 2)	50.00 (25.0 x 2)	62.50 (31.25 x 2)
Indoor Input Power	W	650 x 2	1100 x 2	1,630	2,200
Indoor Running Current	A	3.70 x 2	5.00 x 2	3.70 x 2	5.00 x 2
Air Flow	V/Ph/HZ	220 ~ 240/1/50	220 ~ 240/1/50	220 ~ 240/1/50	220 ~ 240/1/50
Refrigerant / Control Type		R22 Indoor TXV	R22 Indoor TXV	R407c Indoor TXV	R407c Indoor TXV
Power Source	CFM	2,350 x 2	2,945 x 2	2,350 x 2	2,945 x 2
Air Filter Type / Material		Washable / Nylon	Washable / Nylon	Washable / Nylon	Washable / Nylon
External Static Pressure	pa / in.wg	100 / 0.4	100 / 0.4	100 / 0.4	100 / 0.4
Sound Pressure Level (Measured 1m away from indoor unit)	dBA/unit	64	66	64	66
Unit Dimension (HxWxD)	mm	(440 x 1, 450 x 900)x2	(440 x 1, 750 x 900)x2	(440 x 1, 750 x 900)x2	(440 x 1, 750 x 900)x2
Unit Weight	kg	99 x 2	126 x 2	99 x 2	126 x 2
Connection Liquid	mm(in)	15.88 (5/8)	15.88 (5/8)	15.88 (5/8)	15.88 (5/8)
Pipe Size Gas	mm(in)	28.58 (1 ¹ / ₈)	28.58 (1 ¹ / ₈)	28.58 (1 ¹ / ₈)	28.58 (1 ¹ / ₈)
Recommended Outdoor Unit Model		KDO2-1707 / KDO2-1707-E	KDO2-2107 / KDO2-2107-E	KDO-1707-EK	KDO2-2107-EK

Outdoor Unit Specification

Outdoor Unit			KDO2-1707 / KDO2-1707-E	KDO2-2107 / KDO2-2107-E	KDO2-1707-EK	KDO2-2107-EK
Cooling Capacity	Btu/hr		170,600	213,250	170,600	213,250
	kW		50.00	62.50	50.00	62.50
Input Power	W		15,525	18,120	15,525	18,120
Running Current	A		30.46	34.34	30.46	34.34
Power Source	V/Ph/HZ		380~415/3/50	380~415/3/50	380~415/3/50	380~415/3/50
Refrigerant / Control Type			R22 Indoor TXV	R22 Indoor TXV	R407C Indoor TXV	R407C Indoor TXV
Condenser Type	Qty / Type			Single Coil / Crossed Finned CU Tube With AL. Fin		
Air Flow	CFM		12,000	14,000	12,000	14,000
Unit Dimension (H x W x D)	mm		1,090 x 1032 x 1803	1,090 x 1032 x 1803	1,090 x 1032 x 1803	1,090 x 1032 x 1803
Unit Weight	kg		380	400	380	400
Connection Liquid	mm(in)		15.88 (5/8) (x2)	15.88 (5/8)(x2)	15.88 (5/8) (x2)	15.88 (5/8)(x2)
Pipe Size Gas	mm(in)		34.93 (1 ³ / ₈) (x2)	28.58 (1 ¹ / ₈)(x2)	34.93 (1 ³ / ₈) (x2)	28.58 (1 ¹ / ₈)(x2)

Conditions: 1) Nominal cooling capacities are based on the following conditions : Indoor 26.7°C DB, 19.4 °C WB, Outdoor 35°C DB.

2) All specifications are subjected to change by manufacturer without prior notice.

3) For R410a Series, please contact manufacturer.

ROOFTOP PACKAGED UNIT

PRODUCT INTRODUCTION

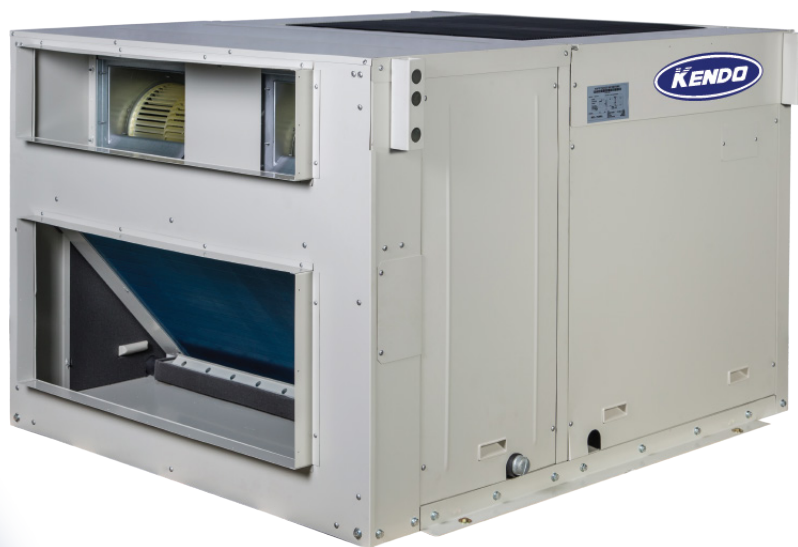
Flow Master Series

KENDO Rooftop Packaged Air Conditioners are designed and manufactured to meet the requirements of the severe climatic conditions and are built specifically for outdoor installations, either on ground or roof level.

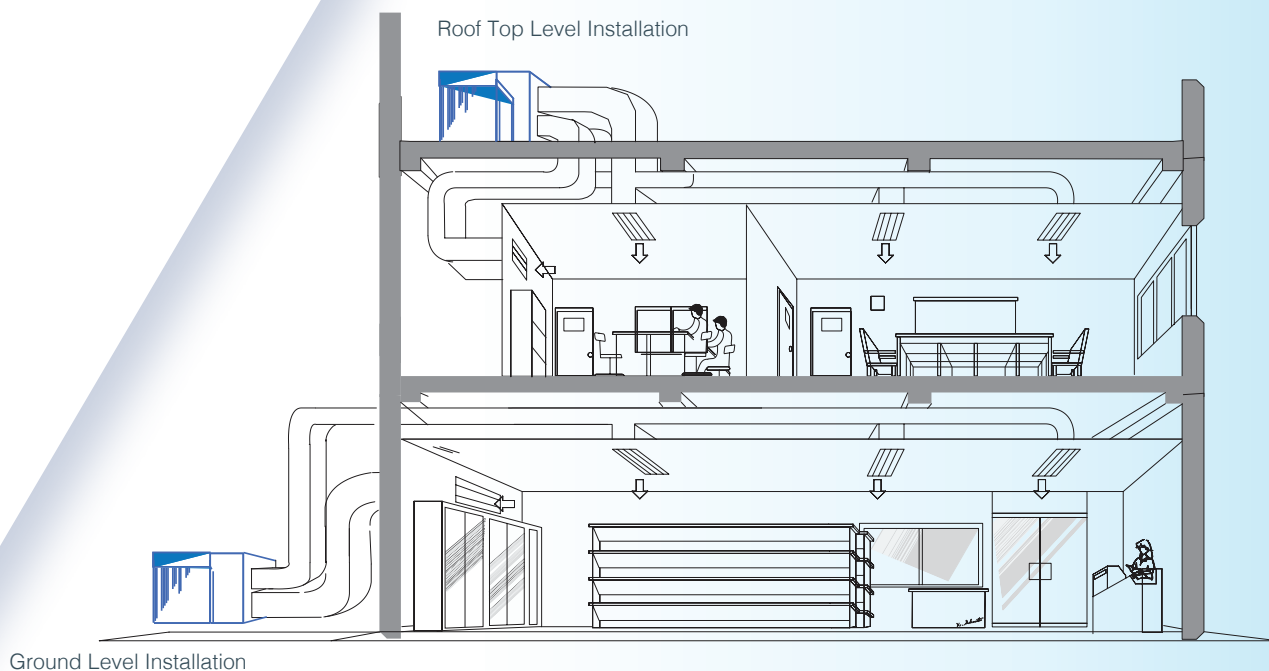
The Rooftop Packaged Air Conditioners are ideal for warehouses, large halls, schools, residences, or wherever the requirement is for a heavy duty unit with a hermetic scroll compressor.

The units are available from 8Hp to 32Hp nominal (24kW to 100kW) in 50Hz. This Rooftop Packaged Air Conditioners are completely assembled, internally wired, charged with refrigerant at factory, tested before ship and ready for installation.

All that is required on site is connecting ducting and power supply. This greatly reduces installation work and costs.



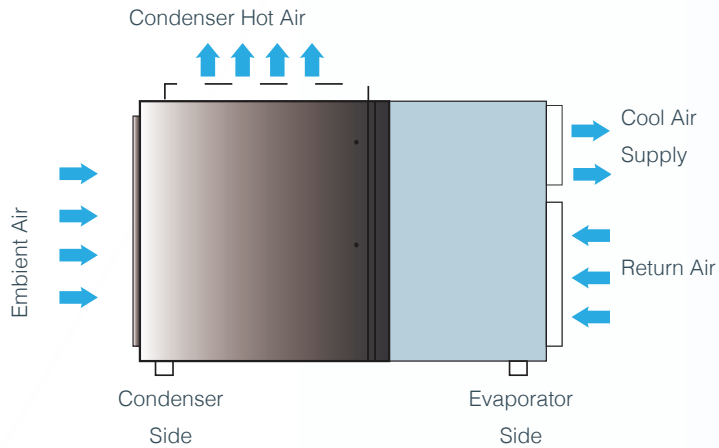
TYPICAL INSTALLATION



STRONG AIR FLOW

Design with high air flow and high external static pressure to make sure the air distribution is even to every corner with long ducting application.

Direct-driven forward curved centrifugal fan are used to deliver an accurate air flow at low noise level.



HIGH PERFORMANCE SCROLL COMPRESSOR

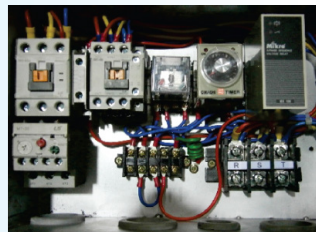
Adopting very famous brand with a special low noise, low vibration and high performance scroll compressor. Possesses a high Energy Efficiency Ratio (EER) delivering exceptional performance with a reduction in energy consumption. 100% gas cooler motor with internal line breaker or solid state motor protectors.



Scroll Compressor

SAFETY FEATURES

Built in internal overload protection for compressor. All outdoor units are equipped with auto reset high pressure and low pressure cut-out to protect against compressor damage due to high head pressure and system leakage respectively.



Outdoor unit control circuit

AIR FILTER

The Indoor unit come with washable synthetic fibre air filter. Designed with easy withdrawal and renewal of filter cells. HEPA, AAF and many type of air filter can be requested to meet the requirement and building application.



Washable Air Filter

INTELLIGENT CONTROLLER (OPTIONAL)

All the features can be easily set and change through microprocessor controller. It ensures comfortable cooling is delivered to the user with user friendly wired keypad controller. Wide range of control features including mode, temperature setting, timer, self diagnosis error code and etc.

**Phase sequencer, overload, wired controller and delay timer is optional.*

Unit Specification (R22)

Model Number			KRP-807C	KRP-1007C	KRP-1207C	KRP-1507C2
POWER SOURCE		V/Ph/HZ	380 ~ 415 / 3 / 50			
TOTAL COOLING CAPACITY	OUTDOOR 35°C DB	Btu/hr kW	81,900 24.0	109,200 32.0	119,500 35.0	163,800 48.0
	OUTDOOR 46°C DB	Btu/hr W	74,800 21.9	105,100 30.8	112,600 33.0	149,200 43.7
SENSIBLE COOLING CAPACITY	OUTDOOR 35°C DB	Btu/hr W	65,600 19.2	87,400 25.6	95,600 28.0	131,100 38.4
TOTAL INPUT POWER		kW	8.1	10.5	12.5	15.6
TOTAL RUNNING CURRENT		A	13.40	16.90	20.20	25.30
CAPACITY STEP		%		0-100		0-50-100
EVAPORATOR FAN	TYPE / DRIVE		CENTRIFUGAL / DIRECT			
	AIR FLOW	CFM / CMH	2,826 / 4,800	3,532 / 6,000		5,651 / 9,600
	ESP	Pa / in.wg		100 / 0.4		200 / 0.8
REFRIGERANT / CONTROL TYPE			R22 / CAPILLARY TUBE			
SOUND PRESSURE LEVEL		dBA	66	66	69	70
CONDENSER FAN	TYPE / DRIVE		PROPELLER / DIRECT			
	AIR FLOW	CFM / CMH	5,651 / 9,600	6,354 / 10,800		11,302 / 19,200
COMPRESSOR	TYPE		SCROLL			
UNIT DIMENSION (H*W*D)		mm		1,000*1,300*1,530		1,200*1,990*1,670
UNIT WEIGHT		kg	360	390	395	655

Model Number			KRP-2007C2	KRP-2407C2	KRP-3207C3
POWER SOURCE		V/Ph/HZ	380 ~ 415 / 3 / 50		
TOTAL COOLING CAPACITY	OUTDOOR 35°C DB	Btu/hr kW	218,400 64.0	238,900 70.0	341,200 100.0
	OUTDOOR 46°C DB	Btu/hr W	209,900 61.5	225,200 66.0	320,800 94.0
SENSIBLE COOLING CAPACITY	OUTDOOR 35°C DB	Btu/hr W	174,700 51.2	191,100 56.0	273,000 80.0
TOTAL INPUT POWER		kW	20.8	25.5	39.8
TOTAL RUNNING CURRENT		A	34.8	42.7	66.7
CAPACITY STEP		%		0-50-100	0-66-100
EVAPORATOR FAN	TYPE / DRIVE		CENTRIFUGAL / DIRECT		
	AIR FLOW	CFM / CMH	7,064 / 12,000		10,066 / 17,100
	ESP	Pa / in.wg	200 / 0.8		250 / 1.0
REFRIGERANT / CONTROL TYPE			R22 / CAPILLARY TUBE		
SOUND PRESSURE LEVEL		dBA	70	73	76
CONDENSER FAN	TYPE / DRIVE		PROPELLER / DIRECT		
	AIR FLOW	CFM / CMH	11,302 / 19,200	12,708 / 21,600	16,954 / 28,800
COMPRESSOR	TYPE		SCROLL		
UNIT DIMENSION (H*W*D)		mm	1,200*1,990*1,670		1,650*2,100*2,100
UNIT WEIGHT		kg	755	765	1,100

Conditions: 1) Nominal cooling capacities (1) are based on the following conditions : Indoor 26.7°C DB, 19.4 °C WB, Outdoor 35°C DB.
 Nominal cooling capacities (2) are based on the following conditions : Indoor 26.7°C DB, 19.4 °C WB, Outdoor 46.1°C DB.
 2) Refrigerant charge volumes are factory charged.
 3) The range of working voltage is within +10% from rated voltage
 4) All specifications are subjected to change by manufacturer without prior notice.

Unit Specification (R407c)

Model Number			KRP-807C-K	KRP-1007C-K	KRP-1207C-K	KRP-1507C2-K
POWER SOURCE		V/Ph/HZ	380 ~ 415 / 3 /50			
TOTAL COOLING CAPACITY	OUTDOOR 35°C DB	Btu/hr	81,900	102,400	119,500	163,800
		kW	24.0	30.0	35.0	48.0
	OUTDOOR 46°C DB	Btu/hr	74,800	98,300	112,600	149,200
		W	21.9	28.8	33.0	43.7
SENSIBLE COOLING CAPACITY	OUTDOOR 35°C DB	Btu/hr	65,600	81,900	95,600	131,100
		W	19.2	24.0	28.0	38.4
TOTAL INPUT POWER			kW	8.1	10.5	12.5 15.6
TOTAL RUNNING CURRENT		A	13.40	16.90	20.20	25.30
CAPACITY STEP		%	0-100			0-50-100
EVAPORATOR FAN	TYPE / DRIVE		CENTRIFUGAL / DIRECT			
	AIR FLOW	CFM / CMH	2,826 / 4,800	3,532 / 6,000		5,300 / 9,000
	ESP	Pa / in.wg	100 / 0.4			200 / 0.8
REFRIGERANT / CONTROL TYPE			R407c / CAPILLARY TUBE			
SOUND PRESSURE LEVEL		dBa	66	66	69	70
CONDENSER FAN	TYPE / DRIVE		PROPELLER / DIRECT			
	AIR FLOW	CFM / CMH	5,651 / 9,600	6,354 / 10,800		11,302 / 19,200
COMPRESSOR	TYPE		SCROLL			
UNIT DIMENSION (H*W*D)		mm	1,000*1,300*1,530			1,200*1,990*1,670
UNIT WEIGHT		kg	360	390	395	655

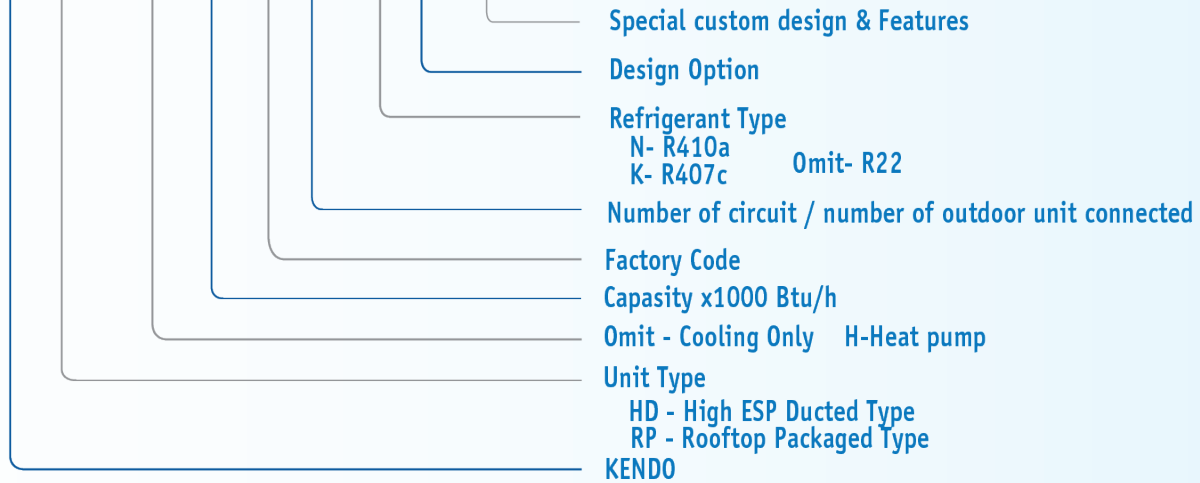
Model Number			KRP-2007C2-K	KRP-2407C2-K	KRP-3207C3-K
POWER SOURCE		V/Ph/HZ	380 ~ 415 / 3 / 50		
TOTAL COOLING CAPACITY	OUTDOOR 35°C DB	Btu/hr kW	218,400 64.0	238,900 70.0	341,200 100.0
	OUTDOOR 46°C DB	Btu/hr W	209,900 61.5	225,200 66.0	320,800 94.0
SENSIBLE COOLING CAPACITY	OUTDOOR 35°C DB	Btu/hr W	174,700 51.2	191,100 56.0	273,000 80.0
TOTAL INPUT POWER		kW	20.8	25.5	39.8
TOTAL RUNNING CURRENT		A	34.8	42.7	66.7
CAPACITY STEP		%	0-50-100		0-66-100
EVAPORATOR FAN	TYPE / DRIVE		CENTRIFUGAL / DIRECT		
	AIR FLOW	CFM / CMH	7,064 / 12,000		10,066 / 17,100
	ESP	Pa / in.wg	200 / 0.8		250 / 1.0
REFRIGERANT / CONTROL TYPE			R407c / CAPILLARY TUBE		
SOUND PRESSURE LEVEL		dBa	70	73	76
CONDENSER FAN	TYPE / DRIVE		PROPELLER / DIRECT		
	AIR FLOW	CFM / CMH	11,302 / 19,200	12,708 / 21,600	16,954 / 28,800
COMPRESSOR	TYPE		SCROLL		
UNIT DIMENSION (H*W*D)		mm	1,200*1,990*1,670		1,650*2,100*2,100
UNIT WEIGHT		kg	755	765	1,100

Conditions: 1) Nominal cooling capacities (1) are based on the following conditions : Indoor 26.7°C DB, 19.4 °C WB, Outdoor 35°C DB.
 Nominal cooling capacities (2) are based on the following conditions : Indoor 26.7°C DB, 19.4 °C WB, Outdoor 46.1°C DB.
 2) Refrigerant charge volumes are factory charged.
 3) The range of working voltage is within +10% from rated voltage
 4) All specifications are subjected to change by manufacturer without prior notice.

Nomenclature

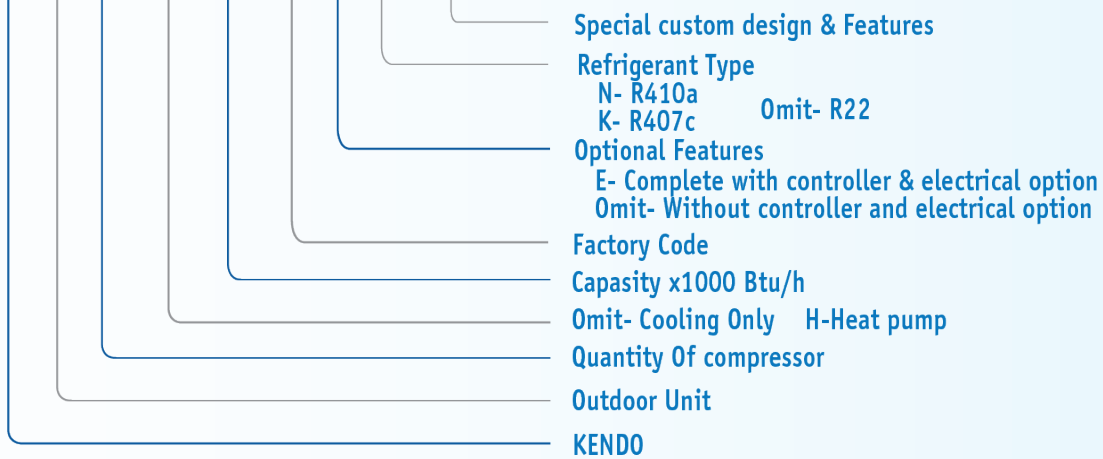
Indoor Unit Nomenclature

K **HD** - **H** **250** **7** **C2** - **N** **A** / **W**



Outdoor Unit Nomenclature

KD **O** **2** - **H** **200** **7** **E** **K** / **D**





KENDO APPLIANCES MALAYSIA SDN BHD

20-3-2, Jalan Setia Prima(Q) U13/Q, Setia Alam, Seksyen U13, 40170 Shah Alam, Selangor Darul Ehsan. Malaysia

Tel : +603-3343 0686

Fax : +603-3343 2525

Web : www.kendo-malaysia.com